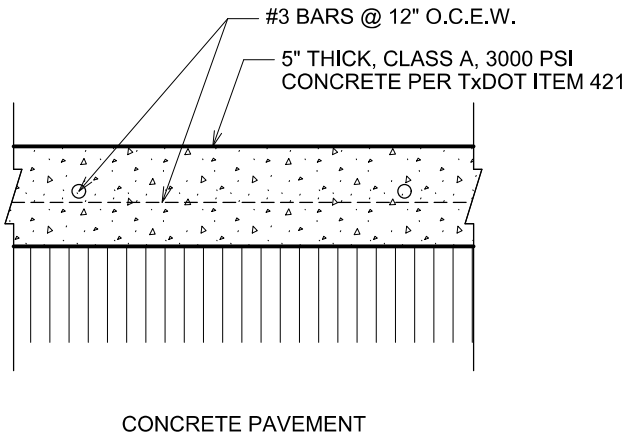
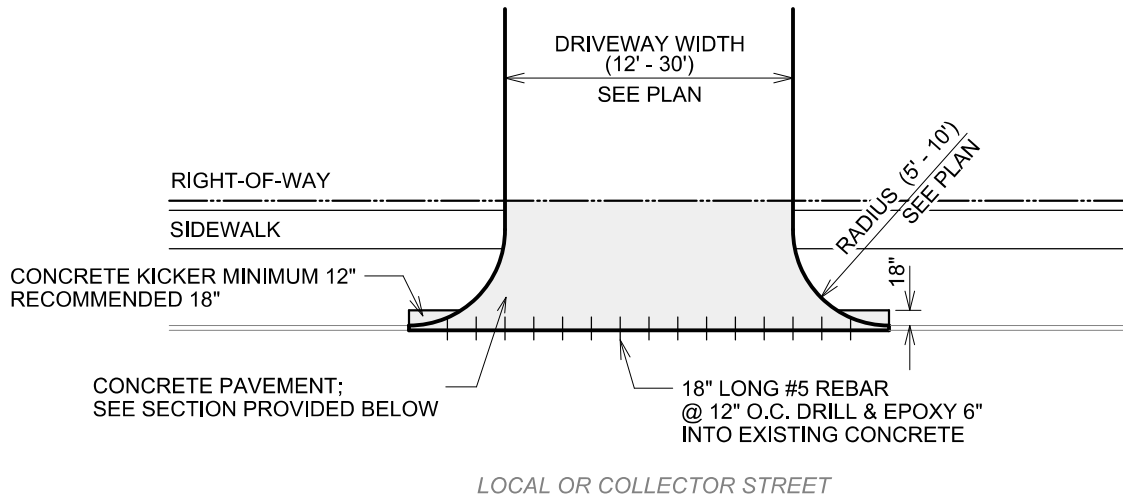


GENERAL NOTES

1. USE CONSTRUCTION JOINT DETAIL IF JOINING TO EXISTING CONCRETE DRIVEWAY. USE EXPANSION JOINT DETAIL AT RIGHT-OF-WAY LINE.
2. GRADE OF REINFORCING STEEL SHALL BE ASTM A615 GRADE 60 IN ACCORDANCE WITH TxDOT ITEM 440.
3. ALL REBAR TO BE SET ON BAR CHAIRS. PLASTIC OR METAL BAR CHAIRS ARE ACCEPTABLE; NO BRICKS, BROKEN CONCRETE, ROCKS, ETC.
4. SUBGRADE SHALL BE COMPACTED TO 95% STANDARD PROCTOR.
5. SEE PAV - 15 FOR DRIVEWAY PROFILE REQUIREMENTS.



RESIDENTIAL DRIVEWAY
(CONNECTING TO LOCAL
OR COLLECTOR)

STANDARD CONSTRUCTION DETAILS

DATE: 07/20/21

REVISED
DATE: 07/20/21

PAV - 13