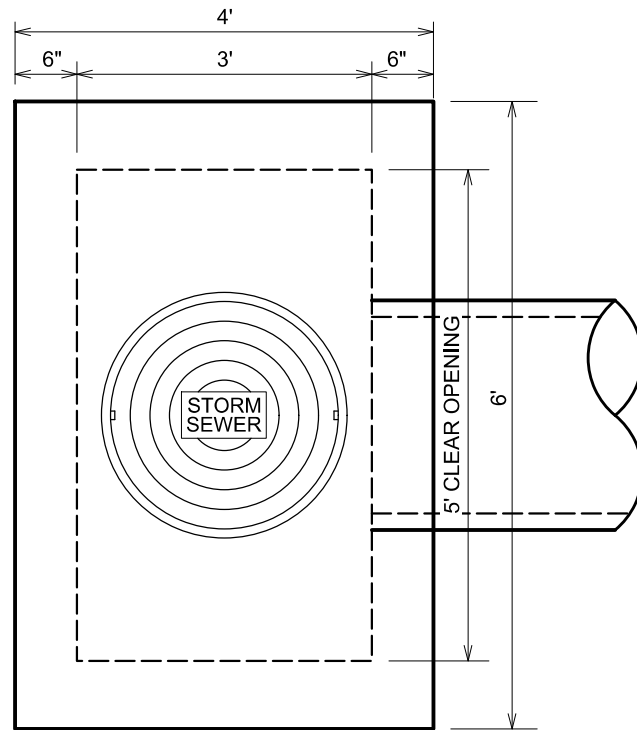
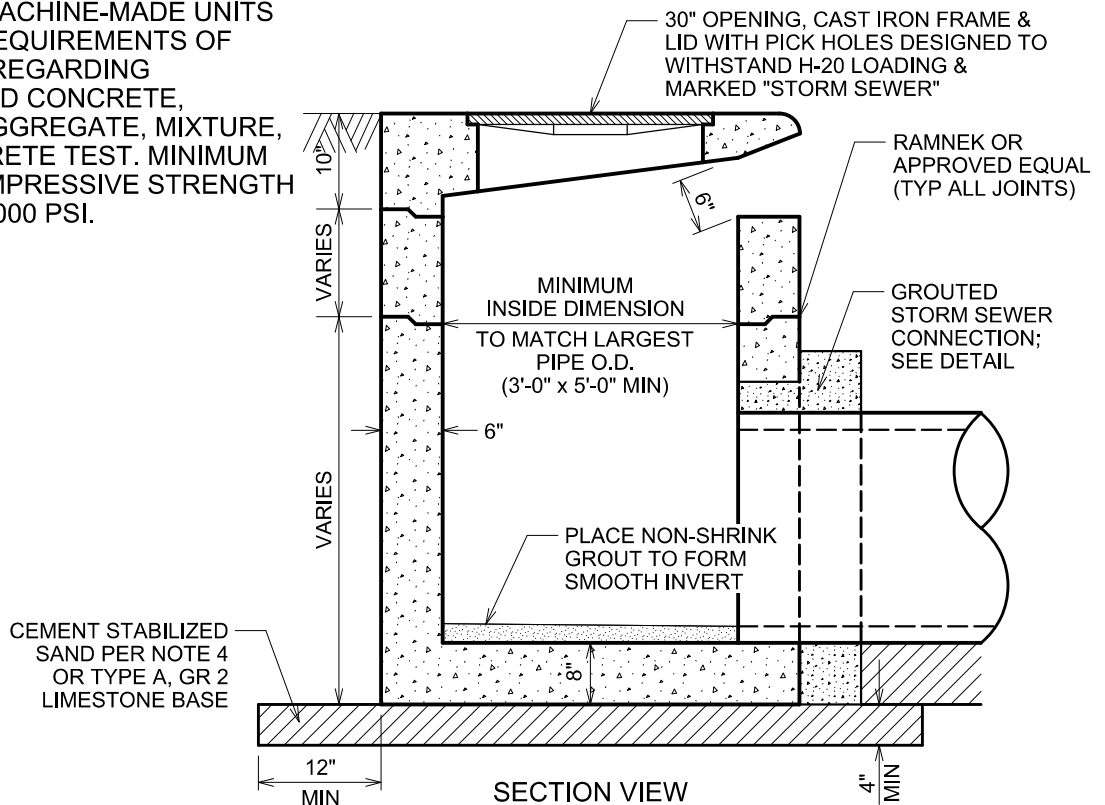


## GENERAL NOTES

1. INSTALLATION OF PRECAST STRUCTURES SHALL BE PER MANUFACTURERS INSTRUCTIONS. CONTRACTOR SHALL SUBMIT SHOP DRAWINGS OF PRECAST STRUCTURES TO ENGINEER PRIOR TO ORDERING MATERIALS.
2. PRECAST STRUCTURE, RING, AND COVER SHALL BE DESIGNED FOR H-20 WHEEL LOADING.
3. PLACE RAMNEK OR EQUAL GASKET MATERIAL BETWEEN PRECAST STRUCTURE SECTIONS IN ACCORDANCE WITH MANUFACTURERS INSTRUCTIONS.
4. CEMENT STABILIZED SAND SHALL CONTAIN A MINIMUM OF 1.5 SACKS OF CEMENT PER CUBIC YARD. SAND SHALL BE SP, SW OR SM PER USC (ASTM D2487) AND SHALL HAVE THE FOLLOWING PROPERTIES: LESS THAN 15% PASSING #200 SIEVE; LESS THAN 2% CLAY LUMPS; PI <7; LL <25.
5. PROVIDE CONCRETE FOR PRECAST MACHINE-MADE UNITS MEETING REQUIREMENTS OF ASTM C 76 REGARDING REINFORCED CONCRETE, CEMENT, AGGREGATE, MIXTURE, AND CONCRETE TEST. MINIMUM 28-DAY COMPRESSIVE STRENGTH SHALL BE 4000 PSI.



TOP VIEW



SECTION VIEW



5' CURB INLET

STANDARD CONSTRUCTION DETAILS

DATE: 07/20/21

REVISED  
DATE: 07/20/21

STM - 1