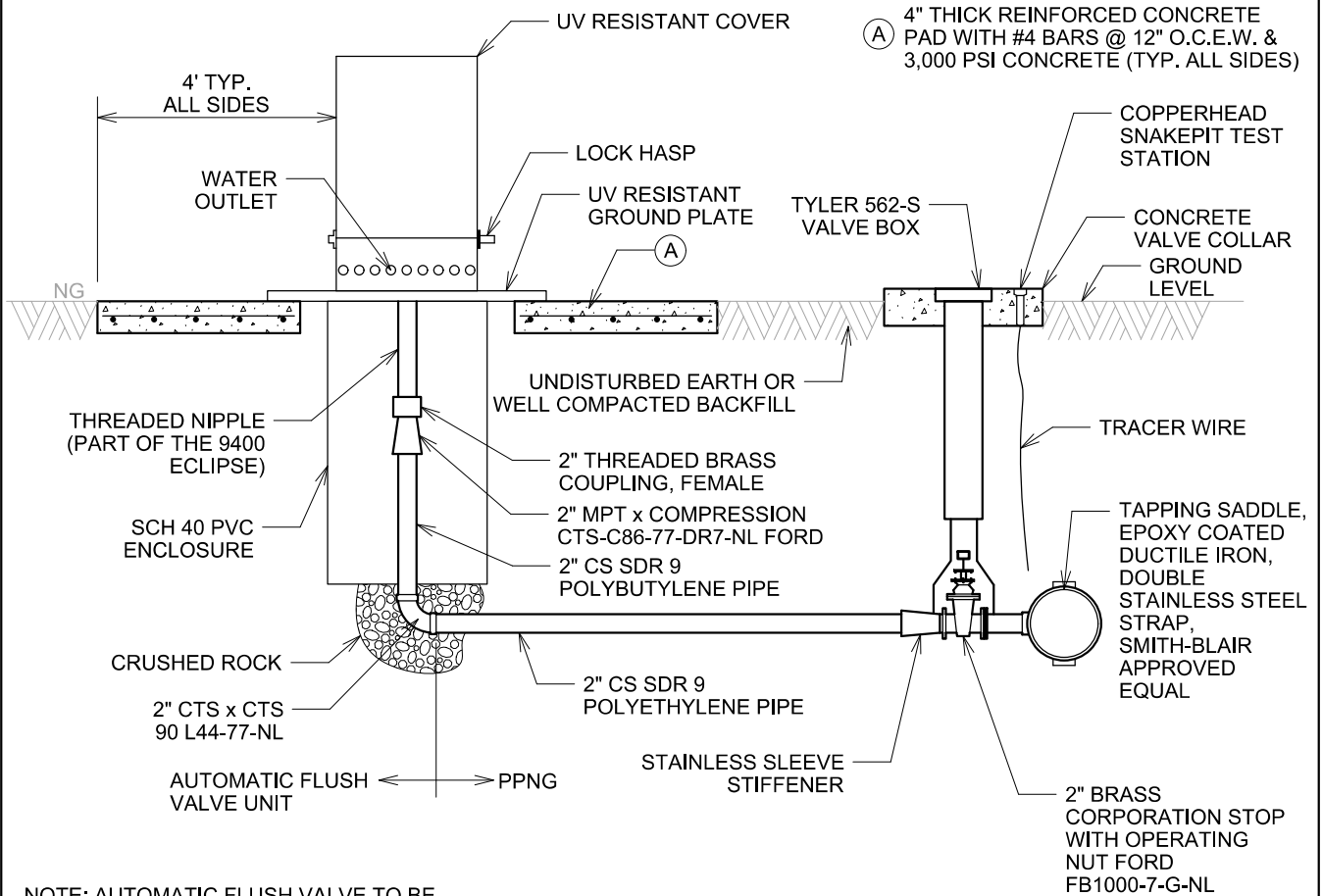


GENERAL NOTES

1. PERMANENT DEAD-END MAIN WILL NOT BE ALLOWED IF LOOPING ALTERNATIVES ARE AVAILABLE. THIS MAY REQUIRE EXTENDING THE WATER MAINS BEYOND THE LIMITS OF THE PROJECT.
2. IN UNAVOIDABLE PERMANENT DEAD-MAIN SITUATIONS, LINES SHALL BE 6" OR LARGER AND NOT EXCEED 600 FEET IN LENGTH AND SHALL BE EQUIPPED WITH A 2" AUTOMATIC FLUSHING DEVICE.
3. THE LENGTH OF A DEAD-MAIN WATER MAIN SHALL BE MEASURED FROM THE INTERSECTION WITH A MULTIPLE FEED (LOOPE) MAIN TO THE END OF THE MAIN.
4. WHERE A WATER MAIN IS STUBBED OUT FOR FUTURE EXTENSION, PLACE A VALVE TO ISOLATE THE DEAD-MAIN AND EXTEND A 20' SECTION OF PIPE WITH A CAP ON THE END ON THE DOWNSTREAM SIDE OF THE ISOLATION VALVE. RESTRAIN THE WATER MAIN TO PREVENT LINE SEPARATION. THRUST BLOCKING WILL NO BE ALLOWED. NO CUSTOMER SERVICES SHALL BE LOCATED ON THE DEAD-END UNTIL IT IS EXTENDED. PROVIDE A 2" AUTOMATIC FLUSHING DEVICE AT THE END OF THE DEAD-END LINE IN ADVANCE OF THE ISOLATED VALVE.



NOTE: AUTOMATIC FLUSH VALVE TO BE MODEL #9400 ECLIPSE AS MANUFACTURED BY THE KUPFERLE FOUNDRY COMPANY OR MODEL #HG-1-BASIC-S-8021-2 AS MANUFACTURED BY HYDRO-GUARD.

NOTE: VALVE PRICE INCLUDES VALVE, VALVE BOX, CONCRETE COLLAR.



DEAD-END MAIN WITH AUTOMATIC FLUSHING DEVICE

STANDARD CONSTRUCTION DETAILS

DATE: 07/20/21

REVISED
DATE: 07/20/21

WTR - 9